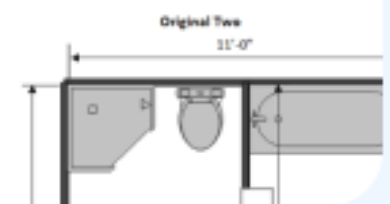
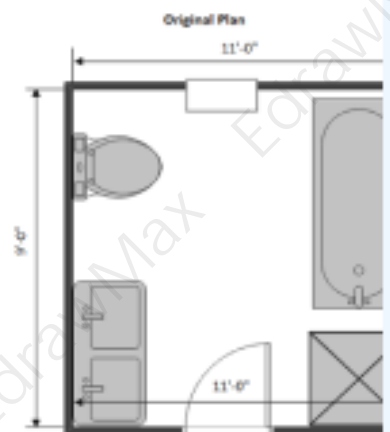
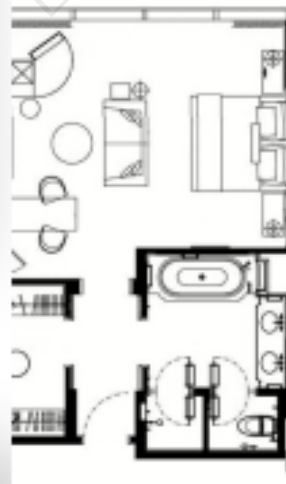
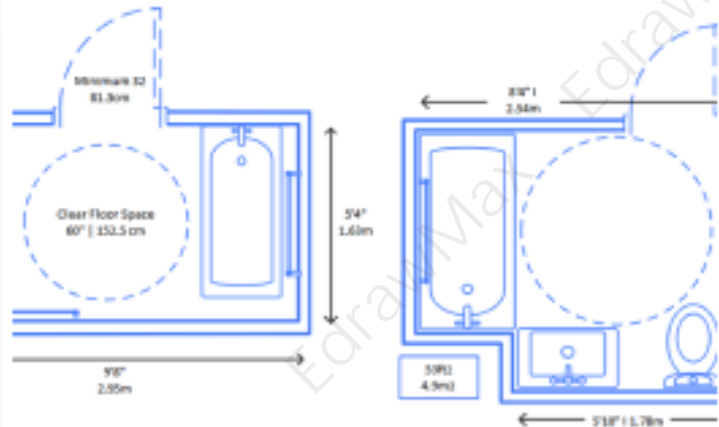
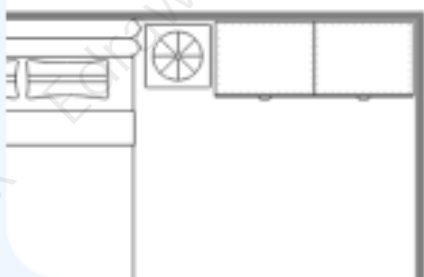


Bathroom Floor Plan Examples

Complete Guide



Bathroom Floor Plan Examples & Templates

CONTENT

1. Free Bathroom Floor Plan Examples & Templates	2
1.1 Half Bath Floor Plan Examples	3
1.2 Separate Room for Shower Bathroom Examples	6
1.3 Master Bathroom Floor Plan Examples	8
1.4 Adjoining Bathroom Floor Plan Examples	10
1.5 Bathroom with Laundry Facility Examples	12
1.6 Basic Bathroom Floor Plan Examples	14
2. How to Use Bathroom Floor Plan Templates	17
2.1 Make Bathroom Floor Plan from Desktop	17
2.2 Make Bathroom Floor Plan Online	20
3. Free Bathroom Floor Plan Software	24
4. Final Thoughts	24
5. Appendix	25
You May Also Like:	25

Do You Want to Make Your Bathroom Floor Plan?

EdrawMax specializes in diagramming and visualizing. Learn from this article to know everything about bathroom floor plan examples and templates, and how to use them. Just try it free now!

Download EdrawMax: <https://www.edrawsoft.com/download-edrawmax.html>

A **bathroom floor plan**¹ is a 2D schematic drawing that visually represents the structure, plumbing system, and bathroom layout using specific floor plan symbols. **Bathroom templates** are mainly used to create a detailed floor plan of a bathroom with components such as the sink, toilet, cabinets, and shower.

EdrawMax gives you free bathroom templates that you can use to create a bathroom floor plan for your house. Here, we will talk about **bathroom floor plan templates** and their types. Learn how to use these templates and check out our free bathroom templates and examples. Learn how to use these templates and check out our free bathroom templates and examples.

1. Free Bathroom Floor Plan Examples & Templates

When people create a house floor plan, they don't put much thought into the design and layout of their bathrooms, which leads to various problems such as poor budget management, inefficient **bathroom floor plan**, etc. The bathroom layout takes priority in a house floor plan because it is a place where people relax after a tiring day. Free **bathroom templates** make it easier to design an efficient bathroom floor plan with a proper layout on EdrawMax Online.

With pre-drawn **bathroom templates**, you can create a bathroom floor plan that optimizes the usage of bathroom space and gives you enough room to add a bathtub, sink, and toilet. Each bathroom template illustrates various items and equipment such as towel racks, fixtures and fittings, taps, and other products. These templates help you design a proper bathroom layout when you specify the position of walls, doors, windows, and cabinets. EdrawMax gives you six types of free bathroom floor plan templates.

- Half Bath Floor Plan Examples
- Separate Room for Shower Bathroom Examples
- Master Bathroom Floor Plan Examples
- Adjoining Bathroom Floor Plan Examples
- Bathroom with Laundry Facility Examples
- Basic Bathroom Floor Plan Examples

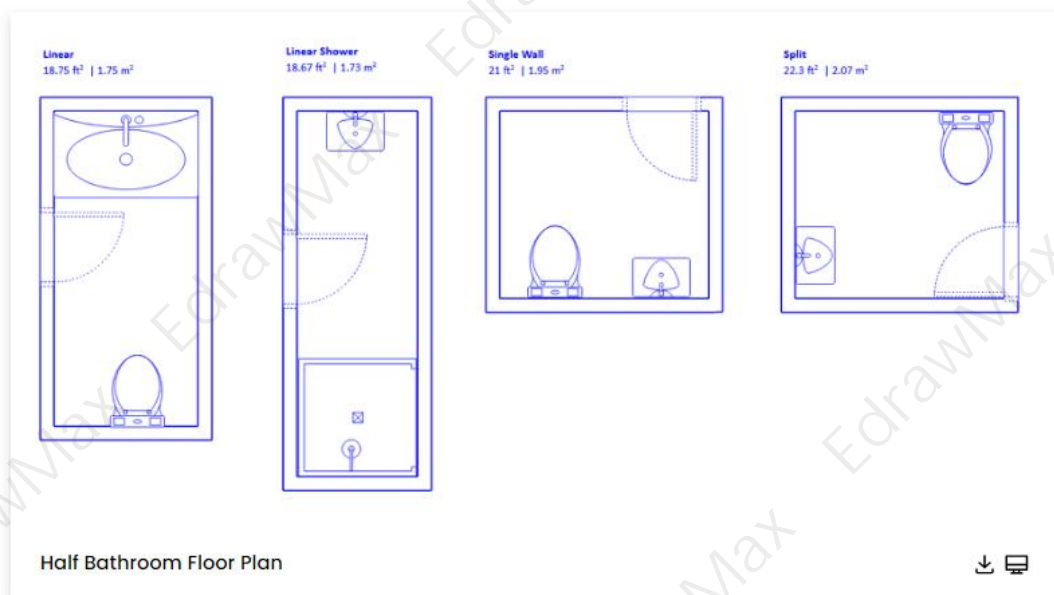
¹ Bathroom floor plan: <https://www.edrawsoft.com/homeplan.html>

1.1 Half Bath Floor Plan Examples

The half bath/powder room is a small bathroom that contains two of the three components of a normal bathroom. You only get a toilet, a sink with cabinets, and a mirror in the powder room. Half baths are the most commonly used layout for a bathroom floor plan because it takes less space and gives you the option to add a separate bath with a shower and bathtub. Powder rooms are mainly used to accommodate guests. EdrawMax gives you free half bath templates to design a bathroom with guest access while efficiently using the space.

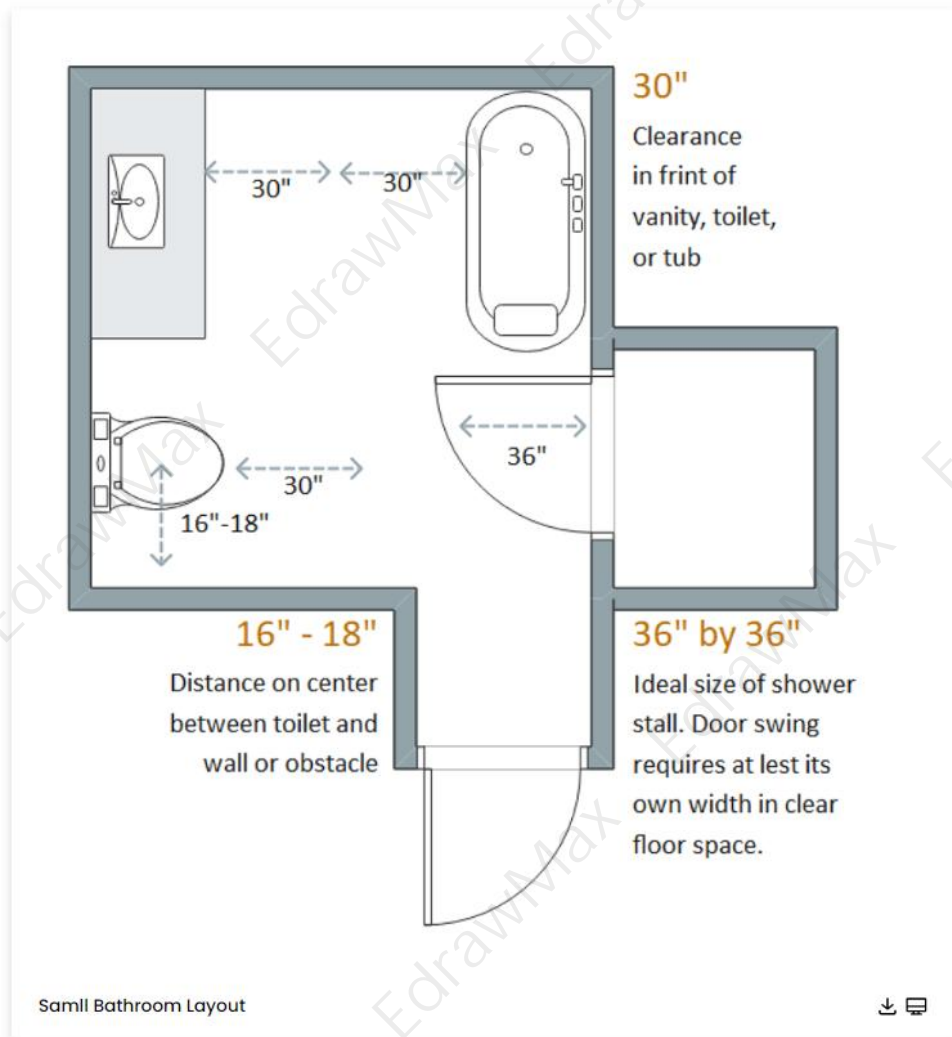
Example 1: Half Bathroom Floor Plan

There are several ways to Half the bathroom floor plan by carving out space from your existing floor plan, depending on the layout of your house. I've presented three options that have worked for my clients: a bathroom hidden beneath a stairwell, one carved from a garage, and another nestled inside a gabled attic dormer. A half bathroom floor plan requires a toilet, a sink, and a mirror. It's nice to have an under-sink cabinet or another storage area for extra tissue paper, hand towels, and soap, but these items can be kept elsewhere if space is limited.



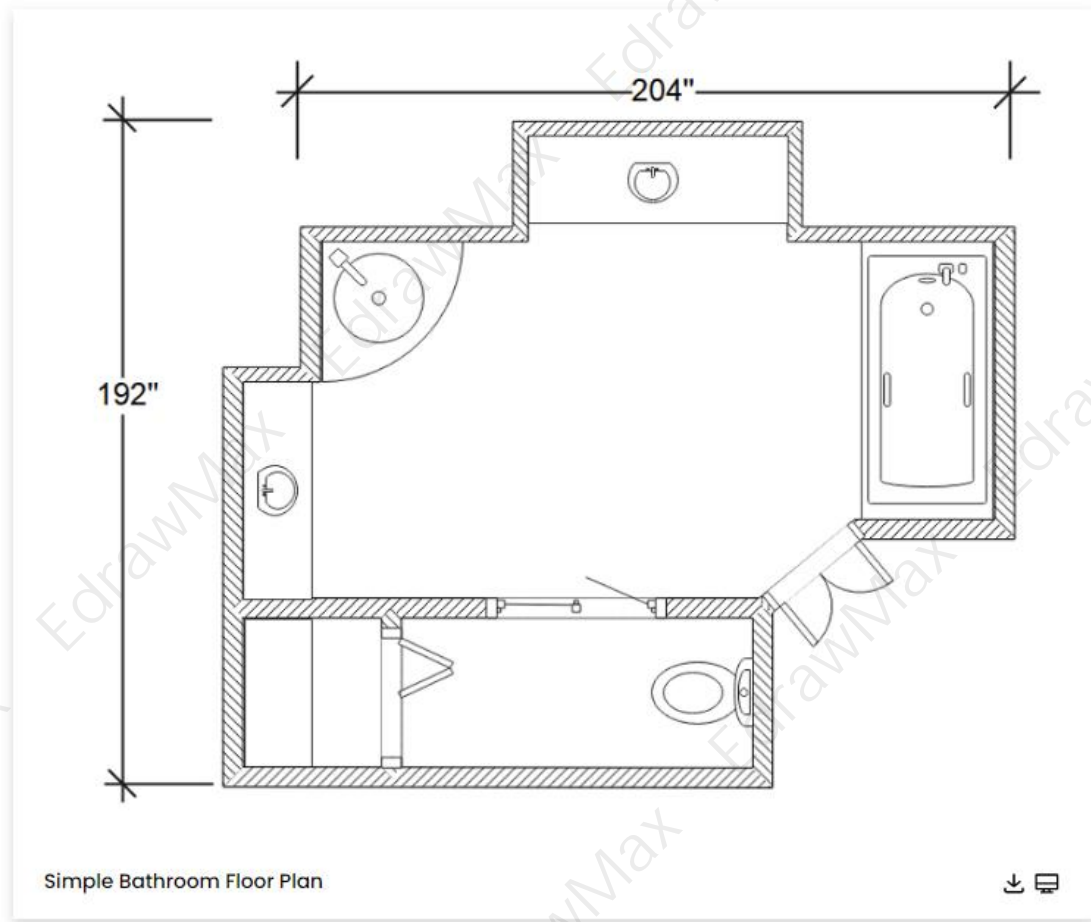
Example 2: Small Bathroom Layout

Here are two typical Small bathroom layouts that would work well as a small family bathroom (5ft x 8ft). A shower bath works well in a small bathroom layout. The door's position is also adjustable. There's enough space for someone to get dressed and undressed, but there can be a bit difficult between the wet zone of anyone getting out of the shower bath and the area in front of the toilet however you can't have it all. One of the important principles of good bathroom design, as stated on the bathroom layouts page, is that there is enough space for people to take their clothes on and off and dry themselves.



Example 3: Simple Bathroom Floor Plan

This Bathroom Floor Plan is efficient and adaptable, allowing for multiple door and window placement options. This Bathroom Floor Plan is an efficient way to fit those program elements into a 12 x 8 space (less than 100 square feet). This provides you with options for door layout and window placement. If you need extra space, pull the tub into a larger area and let it stand on its own. Master bathrooms typically include two sinks, a toilet room, and a shower. Bathtubs are only recommended if you know you will use them or if they perfectly fit the space.

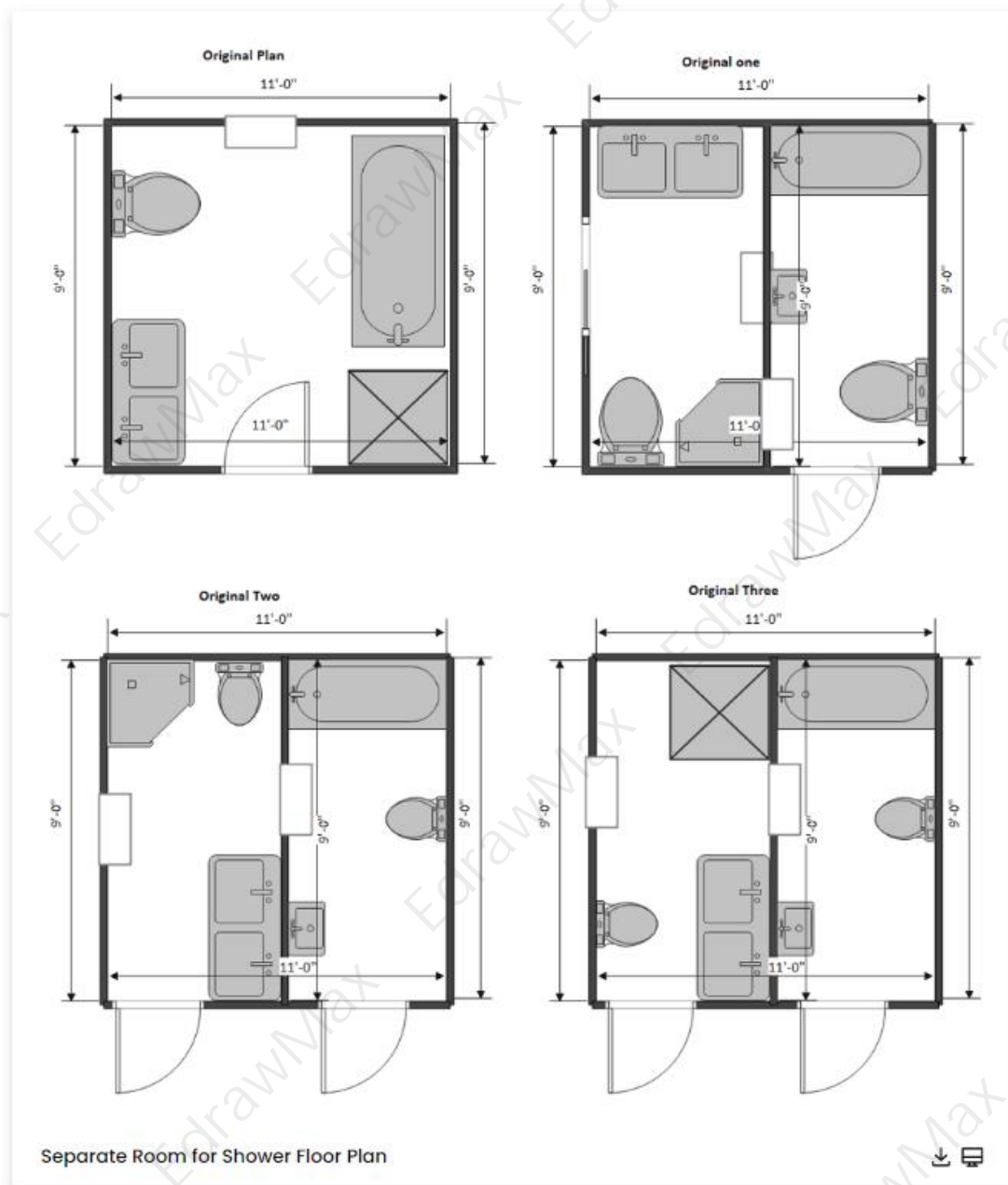


1.2 Separate Room for Shower Bathroom Examples

Suppose you go with the half bath floor plan; you have to add a separate room for the shower because the half baths only contain the toilet and the sink. There are various benefits of using a separate room for the shower. You get a bigger bathtub with a separate shower. As you get more space, you can easily relax, and when you finish bathing, you can hop under the shower to clean after the bath. You can use a separate shower layout if you have a big family to help everyone get clean and ready for the day every morning without wasting time.

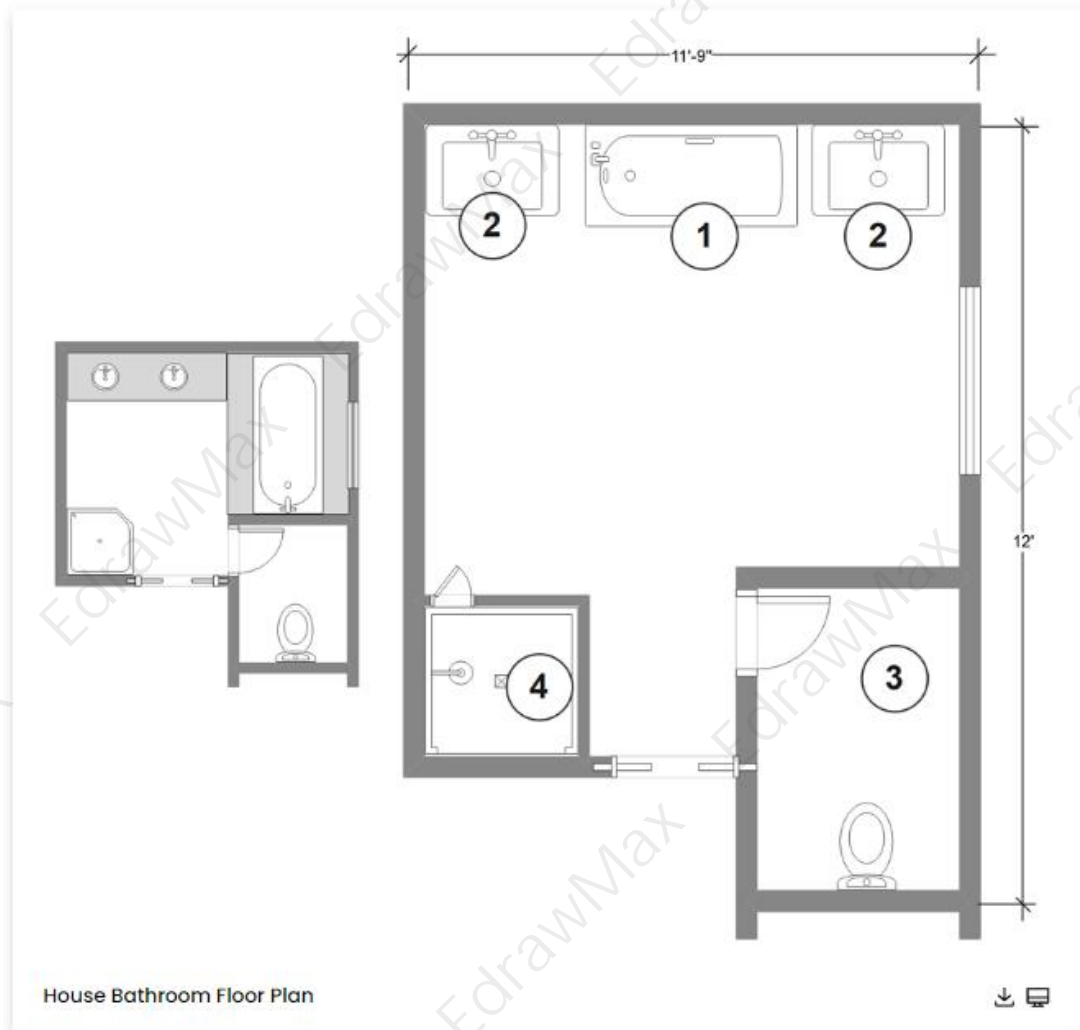
Example 4: Separate Room for Shower Floor Plan

Designing the ideal bathroom layout is an exciting and thoughtful process, whether you're remodeling or building new. Take your time to analyse your needs and design an efficient layout to help bring your dream bath to life. It is easier to set a budget, hire contractors, and shop for beautiful finishes when you have a smart strategy and bathroom dimensions. One of the keys to remodeling success is a separate room for the shower floor plan. In the case of an existing bathroom, weigh the benefits and drawbacks of the current layout. Consider how your ideal space would function with a new bathroom layout. The shower floor has its room.



Example 5: House Bathroom Floor Plan

You can use this Bathroom Floor Plan to help you plan a bathroom layout in your home. There are certain rules to follow when designing a bathroom (whether when building new or remodeling). This is a well-designed bathroom that works. Because all plumbing is on one wall, plumbing costs are reduced. This Bathroom Floor Plan is straightforward, efficient, and gets the job done with minimal fuss. However, that efficiency comes at the price of the room's lack of character and limited counter space. It is a bathroom classic that's always a force to be reckoned with.

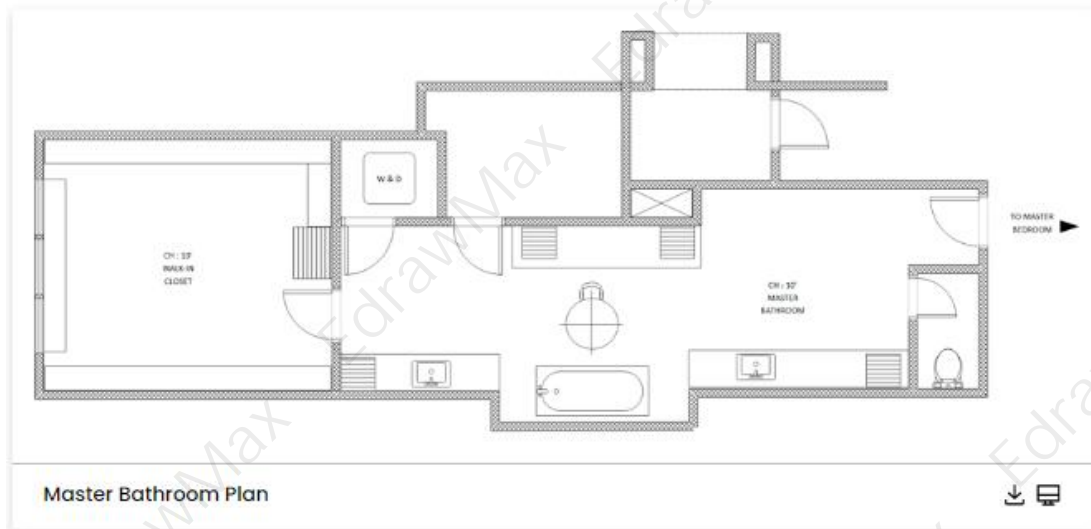


1.3 Master Bathroom Floor Plan Examples

The master bathroom floor plan is best for big houses with lots of space available to design a full bathroom with four fixtures the sink, bathtub, shower, toilet, vanity, and a separate closet for more storage space. Master bathrooms give you peak comfort as you lay in a huge bathtub and relax after a hard-working day. But these layouts are not popular because they waste a lot of space and cost a lot compared to three-quarter baths.

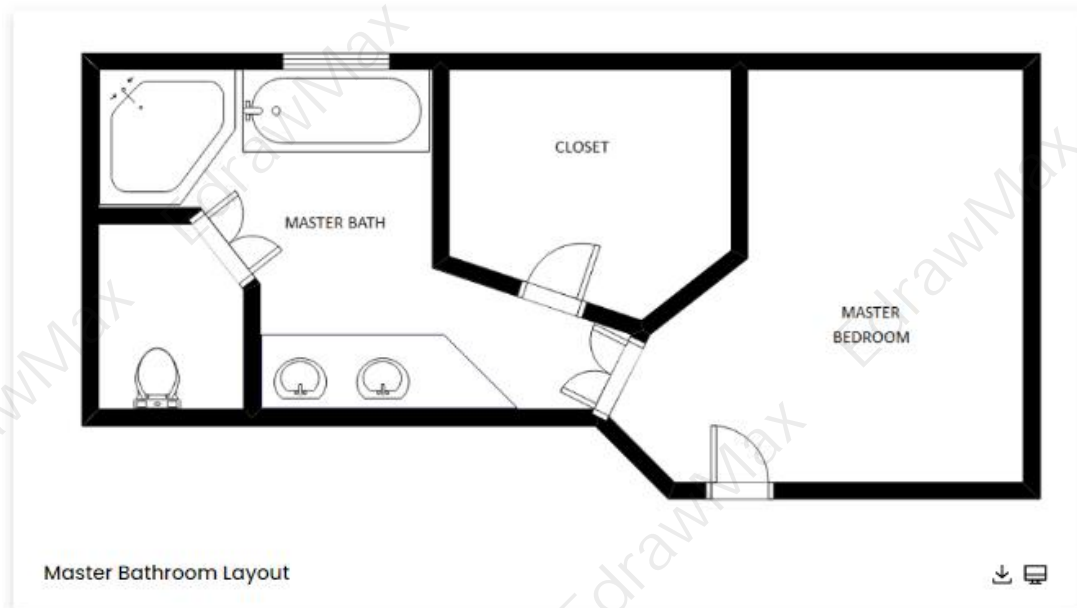
Example 6: Master Bathroom Plan

The bath in this Master bathroom design has a luxurious surround and feels very protected - it's almost like a room in and of itself. The area forms the 'wet zone' at the far end of the bathroom, which includes a seat for putting on clothes (or for someone to chat with you in the bath) and plenty of space to dry off without dragging any water towards the vanity or the toilet area. The separate WC room adds another level of luxury privacy. Some of the Master bathroom designs shown above feature two washbasins in a row.



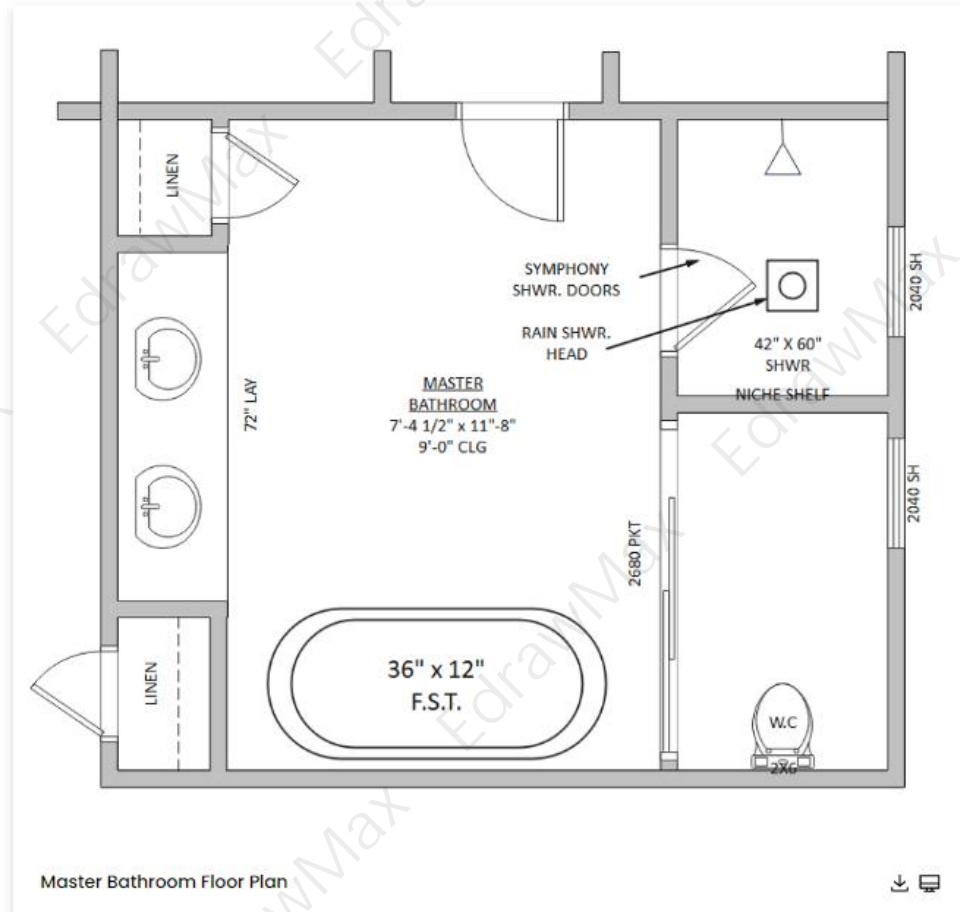
Example 7: Master Bathroom Layout

Because the shower wall serves as the wall for the washbasins, this Master bathroom layout is a little different. The wet zone is perfectly situated at the back of the bathroom, between the bath and the shower. This Master bathroom design opens directly onto the bedroom. It wouldn't be as effective with a door. The shower should be at the opposite end of the bath from the toilet so that the toilet does not obstruct you from getting in and out of the shower - but this means that when you're taking a bath, you have a great view of the rim of the toilet seat.



Example 8: Master Bathroom Floor Plan

This master bathroom floor plan has a configuration in which you step through the shower to get to the tub, creating a good 'wet zone.' Installing a shower screen or curtain between the bath and the shower is an option. If the door had to be moved to the far end of the bathroom, the toilet and washbasin would have to be repositioned to prevent the entire bathroom from being dominated by the toilet. This bathroom door could also be placed at the far end. The toilet and bath are more private with the Master bathroom floor plan. Something to consider about this arrangement between the bath and the toilet.



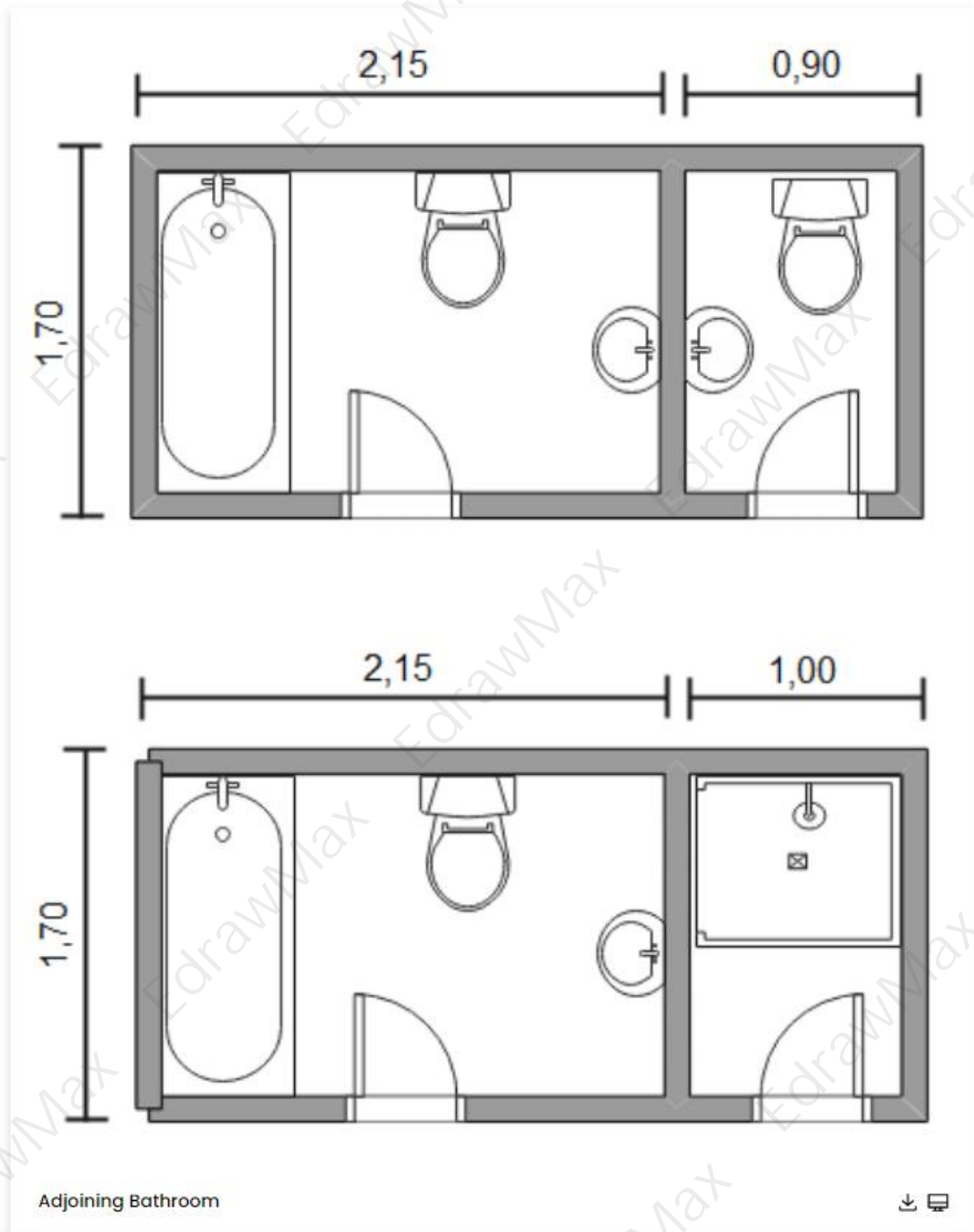
1.4 Adjoining Bathroom Floor Plan Examples

The **adjoining bath layout** is a space-effective bathroom floor plan mainly used in small houses. It is better to have attached bathrooms for every bedroom in your house, but sometimes, there isn't enough space to have separate bathrooms for separate rooms. EdrawMax gives you adjoining bathroom templates that help you create a floor plan where two-bedroom shares the same bathroom. The bathroom goes in the middle, with two doors opening in each bedroom.

Example 9: Adjoining Bathroom

An adjoining bathroom is accessible from the bedroom, but it is accessible from somewhere else, most commonly the hall. Another common term is jack and jill, which refers to a

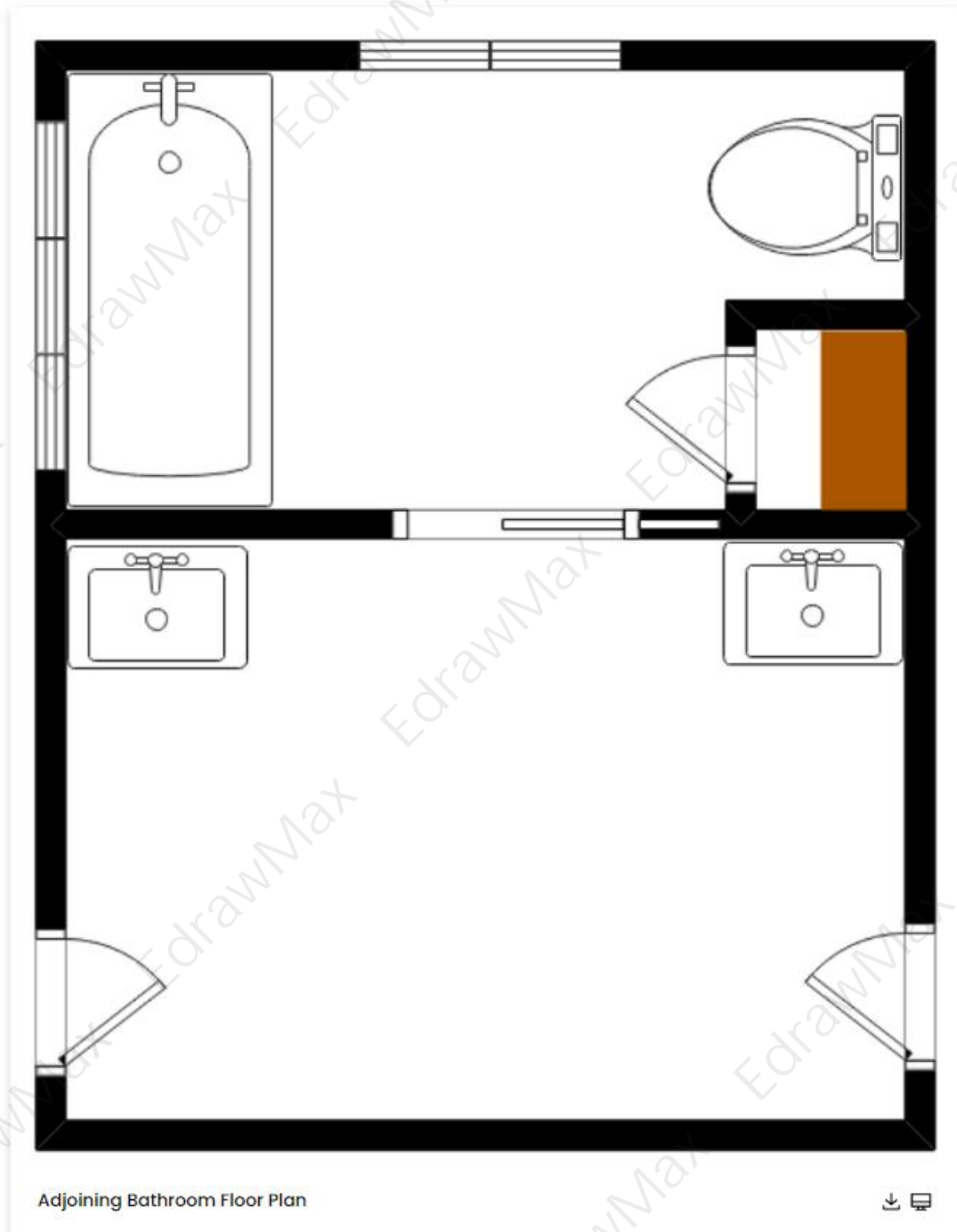
bathroom shared by two bedrooms. It is accessible from both bedrooms but not from anywhere else. The goal of both of these designs is to move freely without colliding with the toilet or the door. These are the only full-bath layouts to consider if you have a bathroom with these or similar dimensions. Although this super-tiny size can fit a full bathroom, it often works better as a third-quarter bathroom.



Example 10: Adjoining Bathroom Floor Plan

You will probably need at least 36 to 40 square feet if you want an Adjoining bathroom floor plan. This Adjoining bathroom floor plan typically translates to a 5' x 8' foot footprint, typical of a small bathroom in older homes. To get an idea of your dimensions, look at the size of

your small bathroom. You have two standard options for this size. You can place the door directly across from the sink if it opens on the 8' side. The toilet should be near the sink, and the shower or tub should be against the 5' wall. A towel rack or shelf can be placed directly across from the toilet. This design provides both space and functionality.



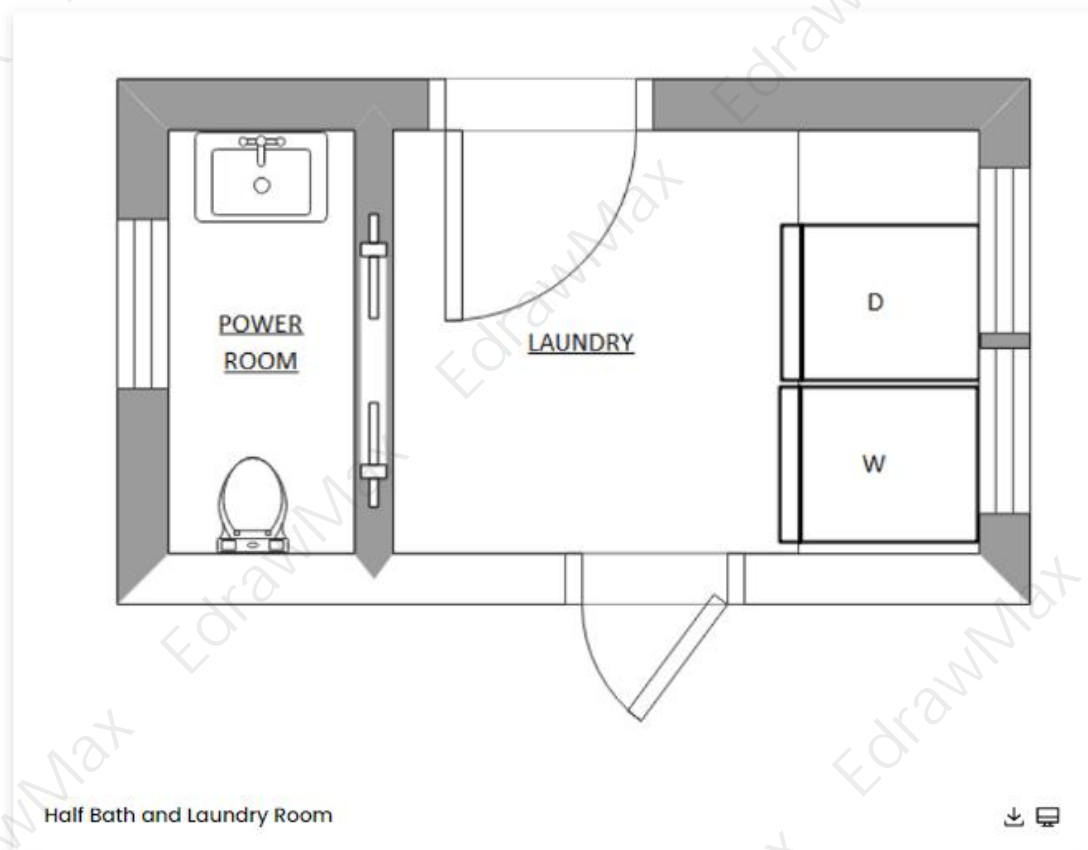
1.5 Bathroom with Laundry Facility Examples

The **bathroom with laundry facilities** is an efficient combination of a bath and laundry room. If you have space to create a standard bathroom but not enough space to build a separate

laundry room, you can use the bath-laundry room layout to optimize the space usage. EdrawMax gives you free **bathroom templates** to create a bathroom floor plan with laundry facilities. These templates include huge storage areas and closets, a consistent interior design, and better ventilation.

Example 11: Half Bath and Laundry Room

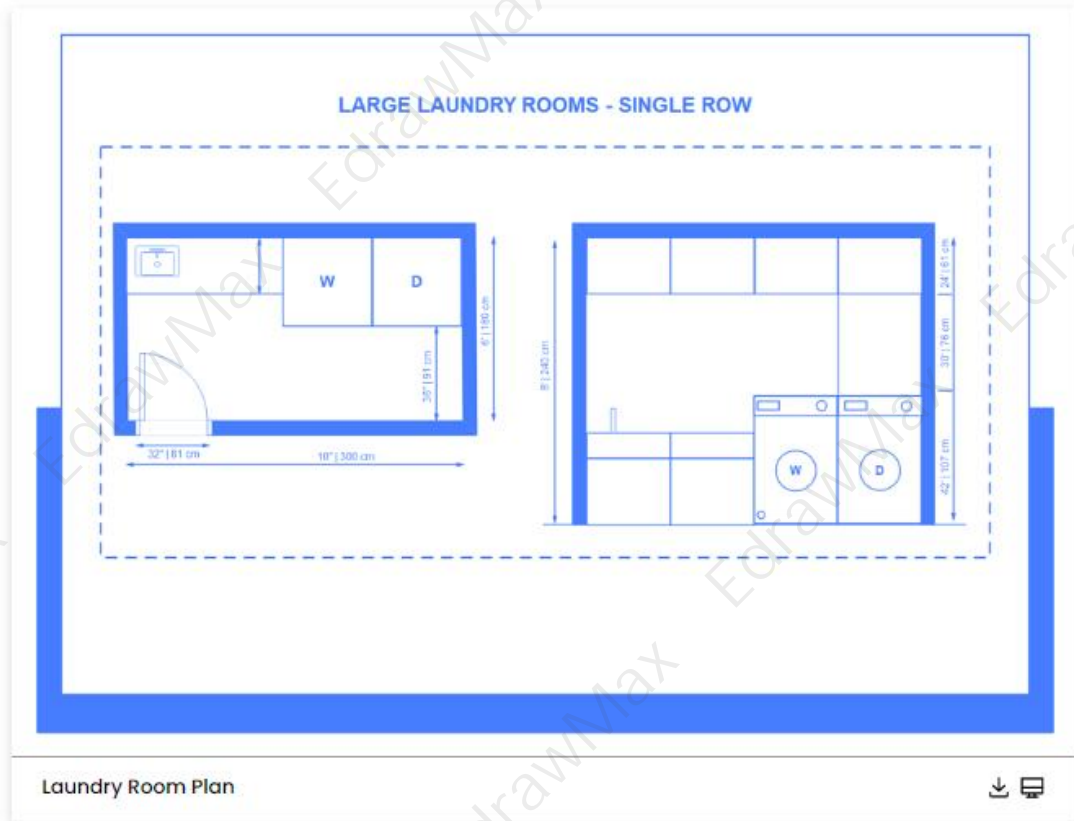
A functional half bath and laundry room are dependent on several factors, including the washer and dryer, wall finishes, floor covering, storage, and organization. The most important aspect of remodeling your laundry room is determining the best room layout for your needs. With large appliances, countertops, cabinets, and sometimes a sink, half baths and laundry rooms are inspired by kitchen layout planning, using popular styles like the L-shaped, U-shaped, galley, and open plan kitchen. The laundry room footprint must work with the available space, but it must also maximize your efforts while reducing your overall workload.



Example 12: Laundry Room Plan

The first step in planning your laundry room is determining its location, as shown in the Laundry room plan. Most people used to keep their laundry machines in the basement to keep the noise out of the main living areas. Laundry rooms are now typically located in the main part of the house, easily accessible. To save space, many people combine their laundry

room and mudroom. The laundry room and a spare bathroom can also be incorporated. These are just a few ideas for combining two rooms into one, as shown in this laundry room layout.



1.6 Basic Bathroom Floor Plan Examples

Sometimes you do not have the space for a larger bathroom. This Bathroom Floor Plan provides you with a 3/4 bathroom that works well even in a small area. Some of the best are small bathrooms that are done right. They always appear larger than they are, and catching people off guard with them is fun. Consider how you design your space with this Bathroom Floor Plan, and you might be surprised by the small details. Understand the codes that govern how much space your fixtures require and consider how to overlap those clearances to save space and maximize the room.

Example 13: Bathroom Layout

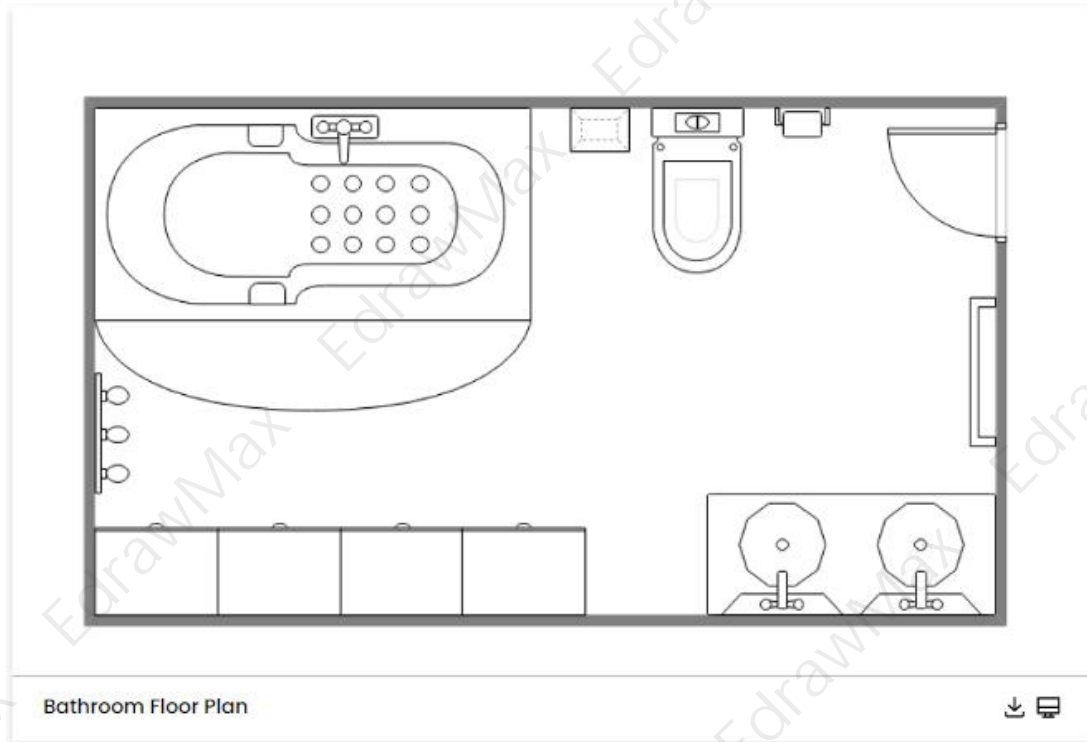
This main bathroom layout is ideal when you need to share but have limited space. It arranges plumbing fixtures along two walls, with the vanity and toilet on one side of the room and the tub or shower. An alcove frames the large tub with end shelves for additional storage, and the double vanity saves space by having shallow ends. The walk-in shower saves money because there is no need for a door. This Bathroom Layout typically provides a greater variety of vanity size and style options. Two sinks (or a double vanity) are a nice

addition to a shared master bath.



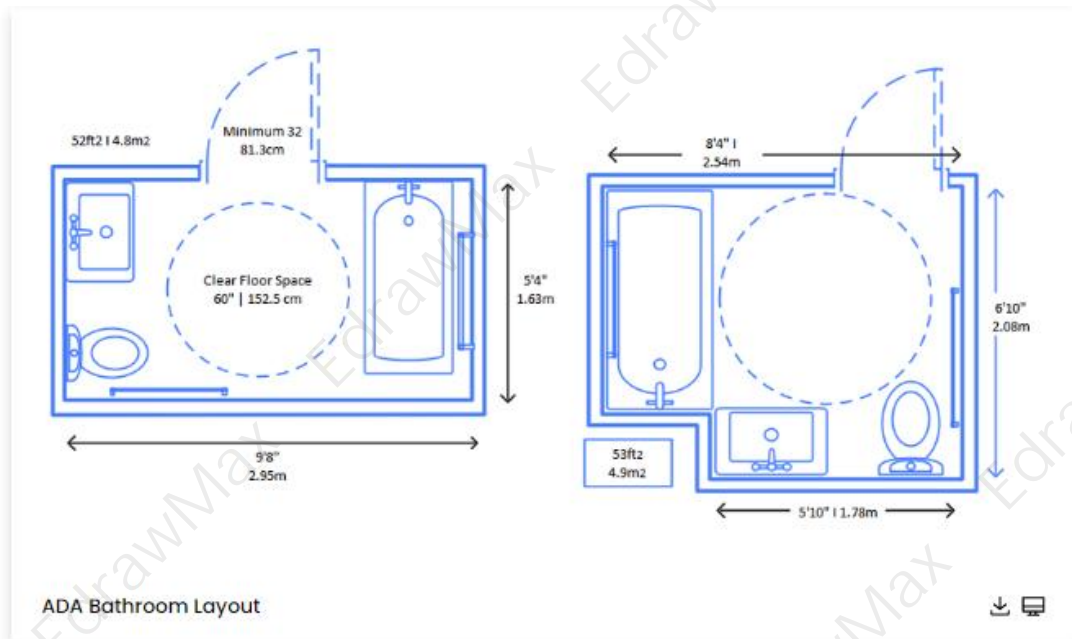
Example 14: Bathroom Floor Plan

This typical floor plan helps you consider small details when designing the layout for a bathroom in your house. Try to create such a floor plan in EdrawMax, or use this example and customize it to fit your needs. It is very easy to learn and use.



Example 15: ADA Bathroom Layout

The ADA bathroom layout guidelines are intended to protect people with disabilities by ensuring enough space in public restrooms. When designing an ADA bathroom layout, there are numerous guidelines to follow. For handicap-accessible restrooms, specific dimensions must be followed. The dimensions of the grab bars, mirrors, sink, toilet, tissue dispenser, towel dispenser, seat covers, and hand soap dispensers must be adhered to in each restroom. The Americans with Disabilities Act (ADA) established minimum standards for public toilets and commercial bathrooms. These requirements apply to all government, state, and local agencies, parks, recreation centers, and retail businesses for new and altered construction sites.



2. How to Use Bathroom Floor Plan Templates

There are two methods of using **bathroom floor plan templates** to create a perfect bathroom floor plan. The first method lets you develop a bathroom floor plan after downloading the template and the EdrawMax diagramming software on your computer. The other method is editing online, and use templates from Template Community, check the details below. Or learn more details of [bathroom floor plan guide](#)².

2.1 Make Bathroom Floor Plan from Desktop

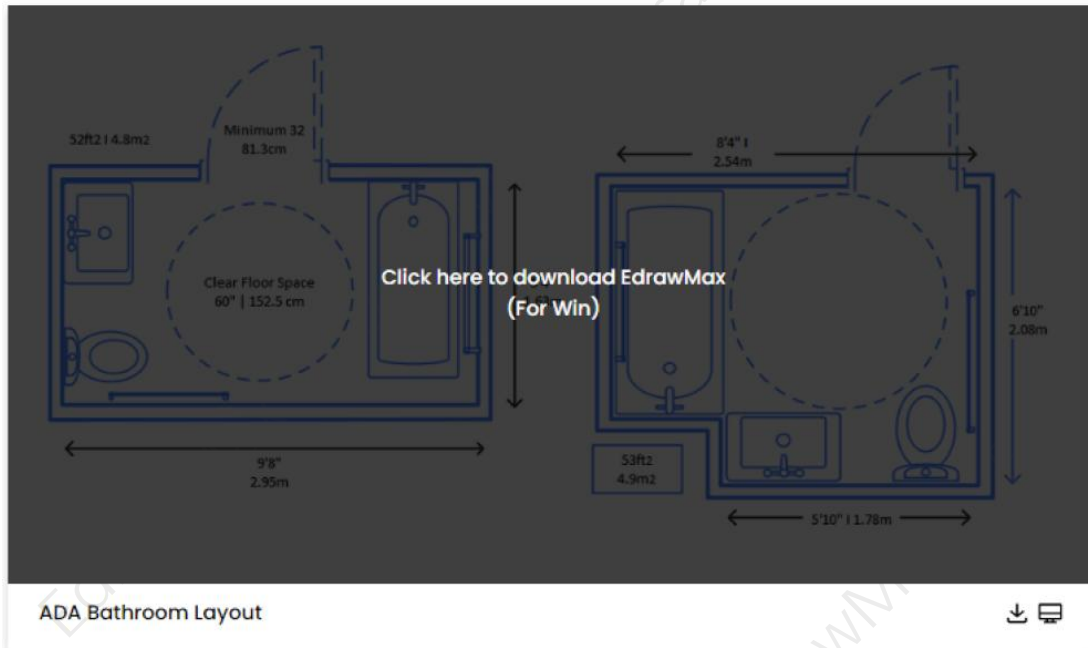
There are two methods of using a **bathroom floor plan template** to design a perfect bathroom layout. The first method lets you develop a bathroom floor plan after downloading the template and the EdrawMax diagramming software on your computer. Following is the guide for the first method on how to use bathroom templates.

Step 1: Install EdrawMax

You can edit the templates directly from this page. First of all, when your mouse click to the templates on this page, you can download the [EdrawMax](#)³ easily, or you can download EdrawMax here.

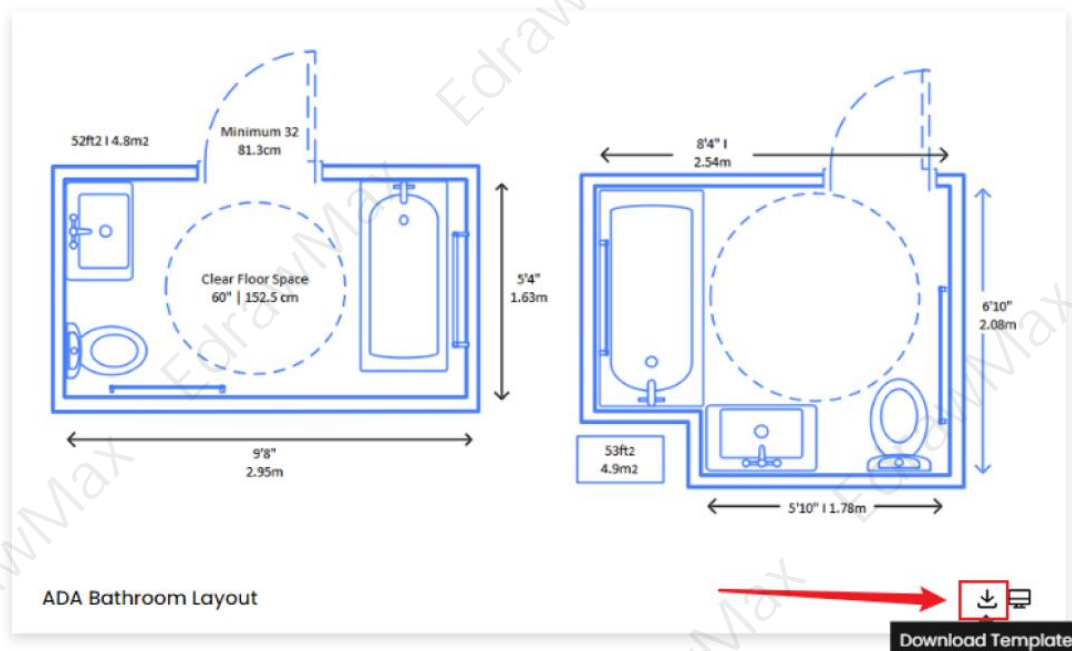
² Bathroom floor plan guide: <https://www.edrawsoft.com/floorplan/design-your-own-house-floor-plans.html>

³ EdrawMax: <https://www.edrawsoft.com/edraw-max/>



Step 2: Download the Template

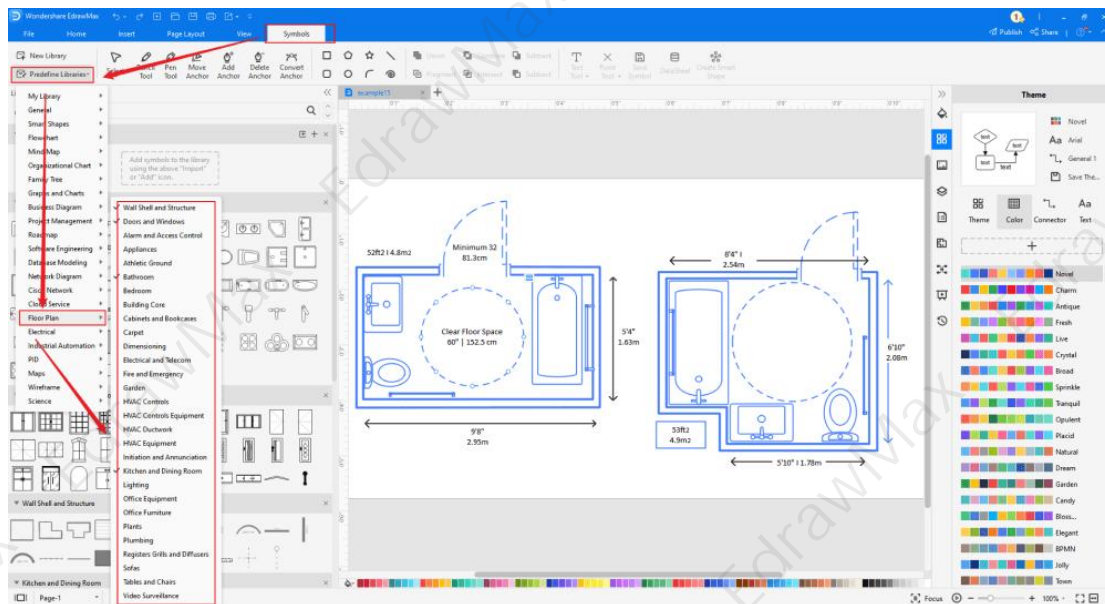
After installing EdrawMax, you can go and download the template by clicking on the bottom right corner or look for a template in the EdrawMax library without going online in desktop.



Step 3: Open the Template

After downloading the template, you can double click to open it in EdrawMax diagramming software, or you can open EdrawMax beforehand and navigate to the template to open it.

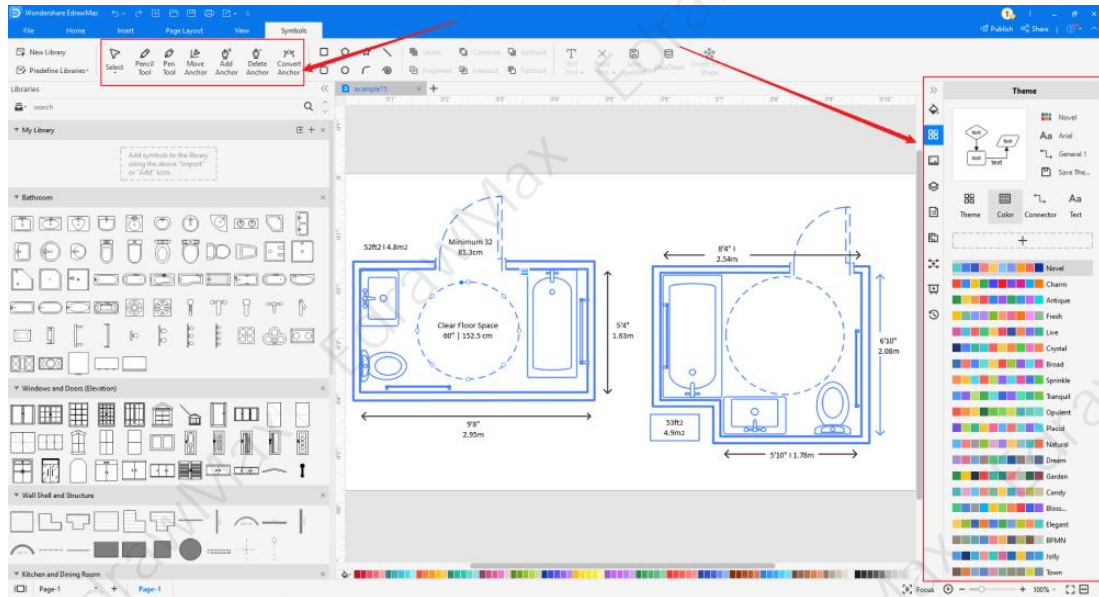
Every bathroom floor plan diagram is incomplete without symbols. Head to the '**Symbols**' section and click on the '**Bathroom**' and '**Floor Plan**' to import important symbols. Learn more [bathroom floor plan symbols](#)⁴ and find symbols you want here.



Step 4: Customize the Kitchen floor plan Template

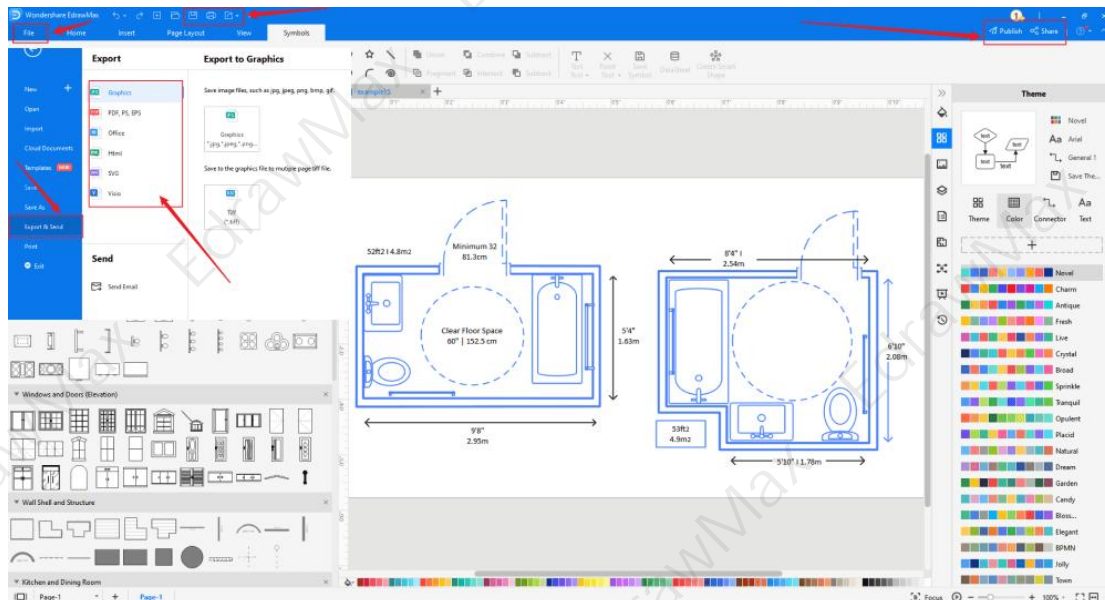
After opening it, the next step is to customize and edit the **bathroom template**. EdrawMax gives you various unique diagramming tools that help you edit the template any way you want. You can change the color and the font liner of the template. You can edit the layout and include various elements such as bathtub, windows, door, shower, and cabinets using bathroom floor plan symbols from the EdrawMax symbol library. EdrawMax features a comprehensive library with 26000+ professional symbols that you can use for free with an easy **drag and drop**.

⁴ Bathroom floor plan symbols: <https://www.edrawsoft.com/symbols/bathroom-vector-icons.html>



Step 5: Save or Export

After you customize the **bathroom template** and complete your bathroom floor plan, the next step is to save or export your drawing. EdrawMax supports various document formats, which means you can export your drawing in any format you want, such as Microsoft Office, pdf, graphics, HTML, Visio, and many others. Export your drawing by going to the 'File' option in the top menu bar and clicking on 'export'. After that, select the document format and click ok. You can also share your drawing on social media or print it directly from EdrawMax. EdrawMax also gives you a presentation mode that you can use to show your drawing to others or your team members.



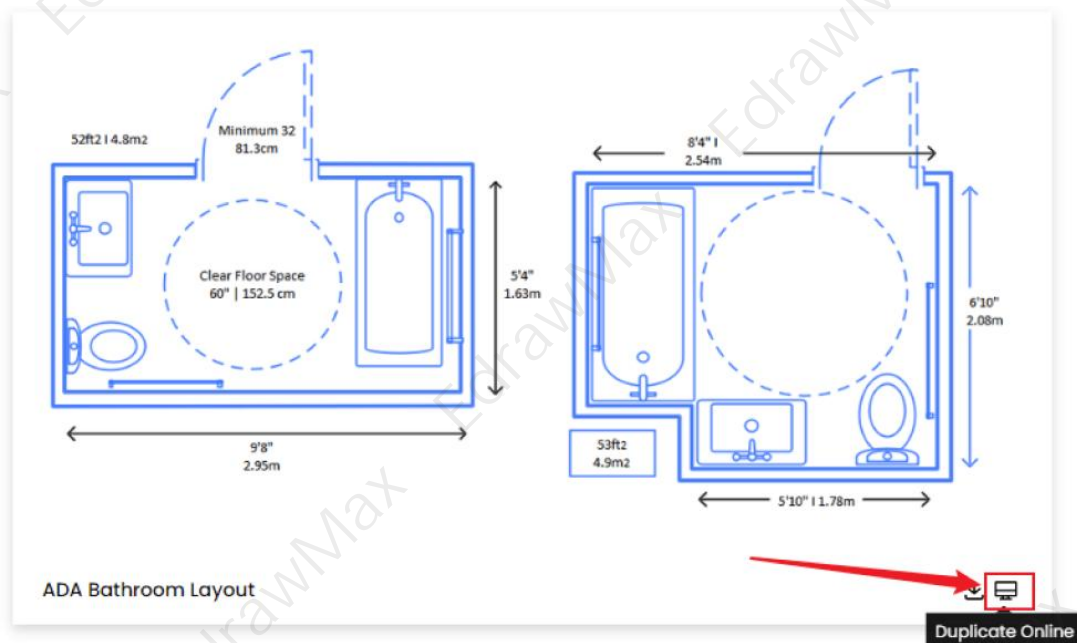
2.2 Make Bathroom Floor Plan Online

<https://www.edrawsoft.com/bathroom-plan-template.html>

You can use the following guide if you want to create your bathroom floor plan online. EdrawMax gives you free templates to select and customize online and share without downloading. It also provides you with all the drawing tools in the EdrawMax software.

Step 1: Click to Duplicate Online

Just click the right bottom corner to choose 'duplicate' template online, then you can go to the online EdrawMax [template community](https://www.edrawmax.com/templates/)⁵. You can head to the fire escape plan template page, and learn more or use directly.



Step2: Search for More Templates

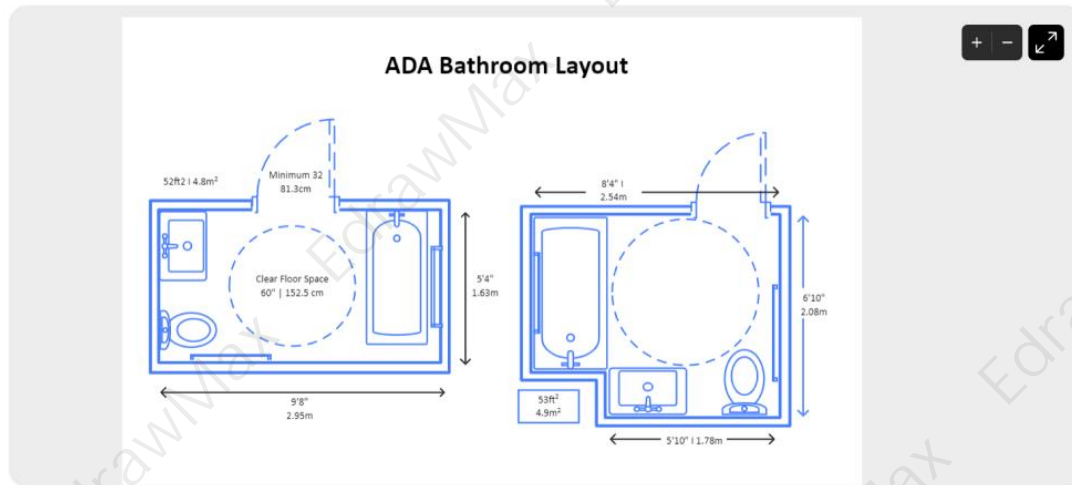
To search for more templates, go to the EdrawMax template community and search for the bathroom template you want. You can scroll down or search with the full name of the bathroom template to get it quickly.

⁵ Template community: <https://www.edrawmax.com/templates/>

ADA Bathroom Layout

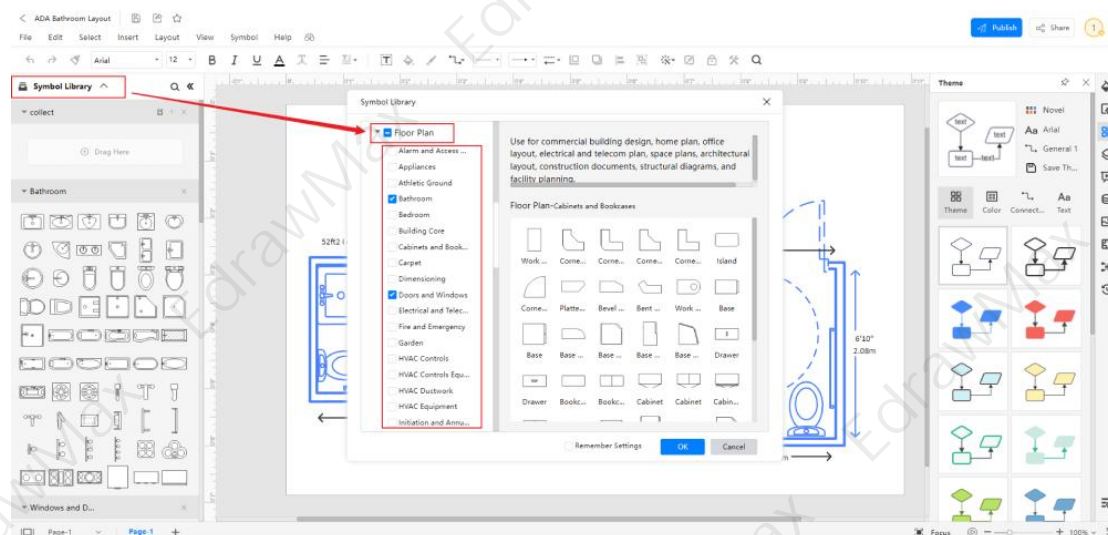
Share

Duplicate



Step3: Open the Template

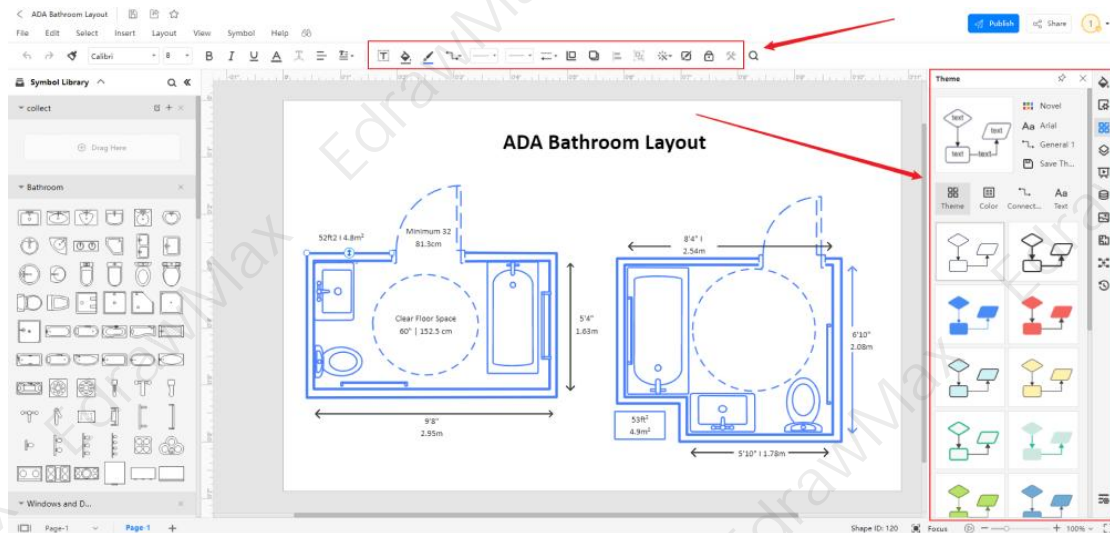
Open the template you want to customize and click on the duplicate option. After clicking, the template will open with EdrawMax Online. Every bathroom floor plan diagram is incomplete without symbols. Head to the 'Symbols' section and click on the 'Bathroom' and 'Floor Plan' to import important symbols. Learn more [bathroom floor plan symbols](#) and find symbols you want here.



Step4: Customize the Template

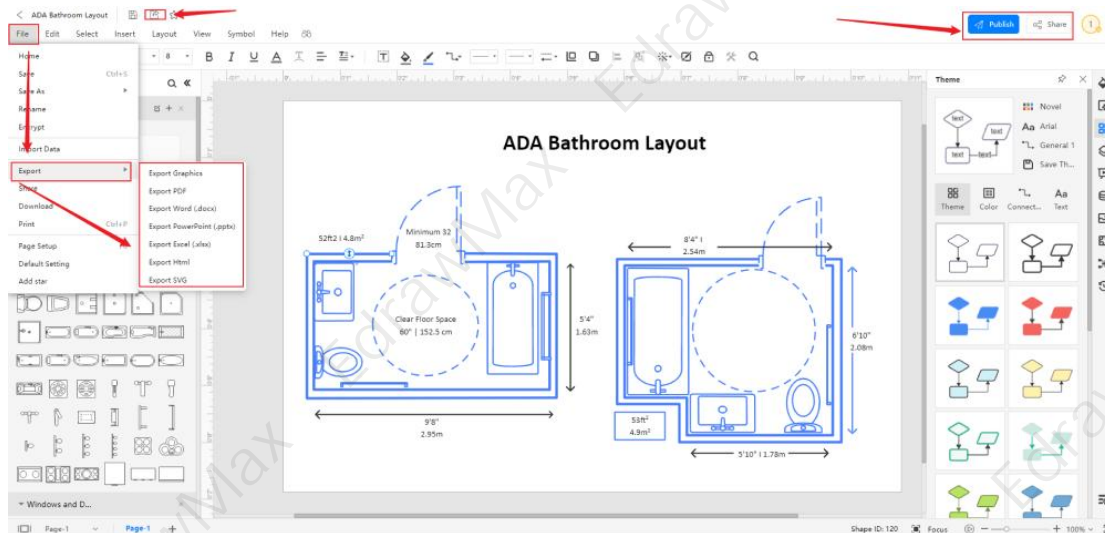
Customize and edit the **bathroom template** after clicking on the duplicate option and getting the drawing canvas with the template you selected. EdrawMax features unique diagramming tools that help you **customize** the template and make whatever changes you want. You can change the color and the font liner of the template. You can edit the layout and include

various elements such as bathtub, windows, door, shower, and cabinets using bedroom floor plan symbols from the EdrawMax symbol library. EdrawMax also features a comprehensive library with 26000+ professional symbols that you can use for free with an easy **drag and drop**.



Step5: Save or Export

After your bathroom floor plan is complete, the next step is to save or export your drawing. EdrawMax gives you the same features as the EdrawMax diagramming software. It also supports multiple document formats so that you can export your drawing in any format. You can save and share your document in pdf, graphics, HTML, Visio, Microsoft Excel, and other popular formats. Click on the 'file' menu and go to 'export'. Click the format you want and enter. EdrawMax features a **presentation mode** and allows you to share your drawing on social media. Or you can "**Publish**" your bathroom floor plan in the template community.



3. Free Bathroom Floor Plan Software

EdrawMax is the best **free bathroom floor plan software**⁶ that comes with a wide collection of professional templates that you can get and customize for free. Using a **bathroom template** to develop a bathroom floor plan makes your job much easier and helps save your time. Every bathroom floor is different, and you need many specific symbols to depict its elements. The EdrawMax template community provides easily editable templates with the correct floor plan layout. The symbol library gives you more than 26000 unique symbols in your diagram. Professionals prefer EdrawMax for its clean user interface and best team collaboration features. EdrawMax is everyone's first choice because

- EdrawMax comes with free bathroom floor plan examples & templates that are 100 percent customizable and editable.
- With the present built-in option, you can easily share the bathroom floor plan with your team and see the live revisions made by your team.
- EdrawMax has a strong community of 25 million users who update the template community with their creative projects.
- EdrawMax is considered the best free bathroom floor plan software for beginners and professionals because of the user-friendly dashboard and easy drag-and-drop feature.
- It supports to export and import files into multiple formats, including MS Office, Graphics, PDF, HTML, Visio, and more.
- All of your bathroom floor plan designs are encrypted to the highest level of security. So, you do not have to worry about losing your creative designs.

4. Final Thoughts

⁶ Free bathroom floor plan software: <https://www.edrawsoft.com/bathroom-floor-planner.html>

The **bathroom templates** are pre-drawn floor plans and layouts that help you create a personalized bathroom floor plan using specific symbols and vectors. The bathroom floor plan is a simple drawing that depicts the features, details, and structure of your bathroom in a bird's eye view making it easier for you to create a customized layout.

When creating a bathroom floor plan, start adding a key feature and use the shower in the bath setup for smaller bathrooms. **EdrawMax** makes your task much easier with free editable templates that you can customize in a few minutes and symbols that you can add with a simple drag and drop. Everyone prefers EdrawMax due to its unique drawing tools and symbol import features.

5. Appendix

The size of your bathroom layout depends on the bathroom type you want to include in your house plan. Half baths with separate shower rooms need less space than master bedrooms. A three-quarter bath is the best space-effective bathroom layout. A standard bathroom with a shower (no bathtub), toilet, and sink need 9x9 or 9x5 sq ft. A full-size bath with a bathtub, vanity, shower, and toilet needs 11x9 sq ft. A master bathroom with additional storage needs 10x12 sq ft.

You May Also Like:

- ⁷Bathroom Floor Plan Symbols
- ⁸Free Bathroom Layout Tool
- ⁹House Plan Complete Guide
- ¹⁰How to Design Bathroom Floor Plan

⁷ Bathroom Floor Plan Symbols: <https://www.edrawsoft.com/symbols/bathroom-vector-icons.html>

⁸ Free Bathroom Layout Tool: <https://www.edrawsoft.com/bathroom-floor-planner.html>

⁹ House Plan Complete Guide: <https://www.edrawsoft.com/homeplan.html>

¹⁰ How to Design Bathroom Floor Plan: <https://www.edrawsoft.com/article/how-to-draw-a-bathroom.html>



Wondershare EdrawMax

Visualize, Innovate, And Collaborate With
EdrawMax



www.edrawsoft.com



support@edrawsoft.com



www.facebook.com/edrawsoft



www.linkedin.com/company/edrawsoft



www.twitter.com/edrawsoft



www.youtube.com/c/cutedrawedwin/videos



www.pinterest.com/edrawsoft/_created



www.instagram.com/wondershare_edrawsoft
